

Land Protection Grand Island



Sarah Costlow
Land Protection Director
scostlow@wnylc.org
716-687-1225 ext. 119

Agenda



- About WNYLC
- How we protect properties - Conservation Easements and Fee Acquisition
- Land protection on Grand Island
- Land protection prioritization
- Questions and comments

Western New York Land Conservancy

Our mission is to permanently protect land with significant conservation value in Western New York for the benefit of future generations.

Currently stewarding
25 nature preserves and
60 easements, totaling
about 7,500 acres.

Conserve farms, forests,
meadows, and wetlands.



Agenda

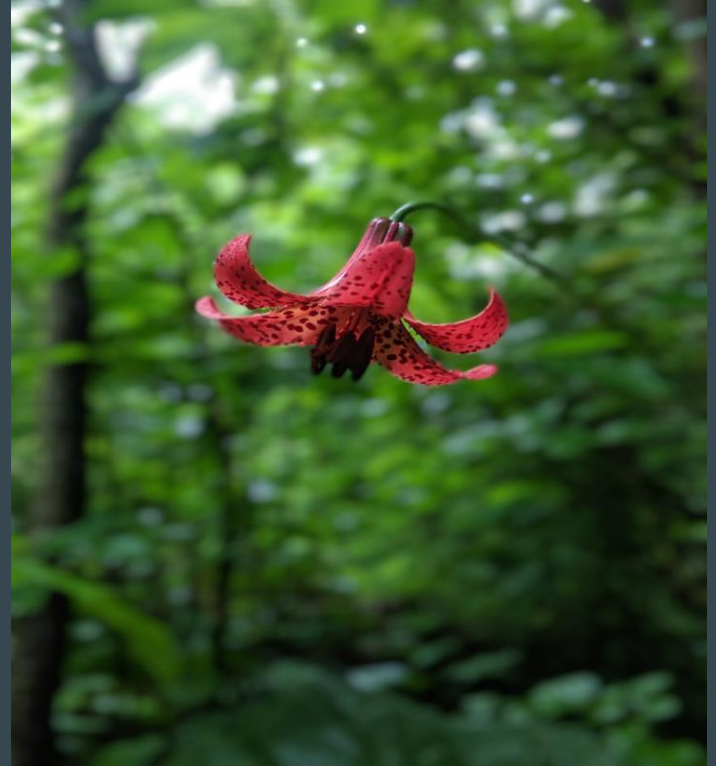


- About WNYLC
- How we protect properties - Conservation Easements and Fee Acquisition
- Land protection on Grand Island
- Land protection prioritization
- Questions and comments

Fee Title Acquisitions

Willing landowner transfers land to us through:

- Purchase for appraised value
- Purchase for less than appraised value (aka “bargain sale”)
- Full donation
- Fundraising campaign usually needed, even with a donation



Our Fee-title Property Responsibilities:

- Management Plan
- Restoration and invasive species management
- Annual monitoring
- Public access
- Prevent third party violations



Conservation Easements (CE)

Legal agreement between Land Conservancy and landowner to permanently protect conservation values on privately owned property limiting or restricting certain activities/uses.



Conservation Easements (CE)

Landowner retains ownership of land:

- Land can be sold or willed to heirs
- CE applies to all future owners
- Public access up to the landowner

All types of land can be protected with CEs:

- Natural land can be through CE or Fee Title
- CE Language is tailored to each situation/property
- All farmland protection is currently with CEs



Land Conservancy Conservation Easement Responsibilities:

- Annual monitoring
- Landowner Relations
- Violation prevention and enforcement

Landowner Responsibilities:

- Land Management
- Uphold easement terms



Agenda



- About WNYLC
- How we protect properties - Conservation Easements and Fee Acquisition
- **Land protection on Grand Island**
- Land protection prioritization
- Questions and comments

Grand Island

Project objective:

Protect 3-5 properties on Grand Island over five years with more in the years to come.

Strategy:

- Focus on priority properties
- Identify interested landowners
- Prioritize potential projects
- Protect parcels



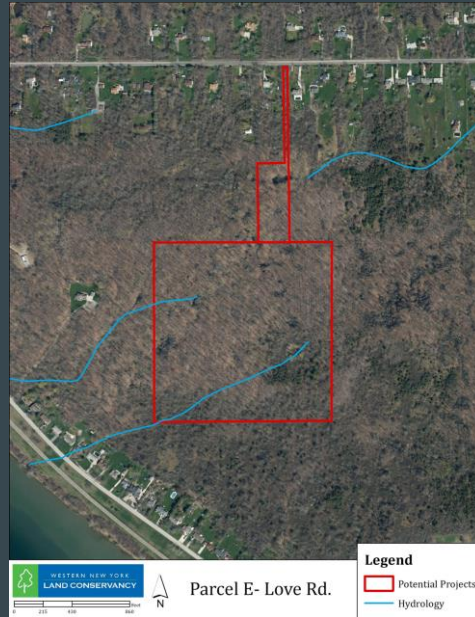
Love Road Preserve

Nature Preserve

Property protected: June 9, 2021

Size: 44 acres

Attributes: headwater forest, 1,560 feet of stream, vernal pools, mature forest



Love Road Preserve

February 29, Land Conservancy staff installed reflective orange trail blazes at the preserve marking the trail and posted the boundary.

Our Stewardship Team still has to install a kiosk and are working with the town to get the roadside ditch culverted so we can provide public access. We're hoping to have these tasks completed by this fall.



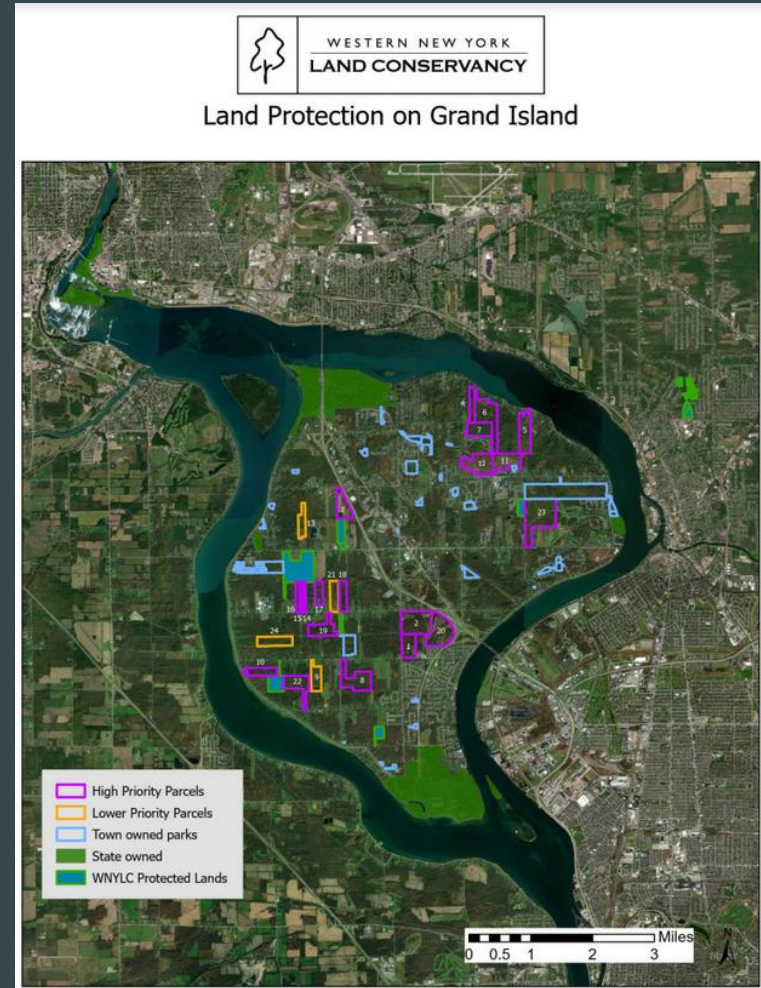
Agenda



- About WNYLC
- How we protect properties - Conservation Easements and Fee Acquisition
- Land protection on Grand Island
- Land protection prioritization
- Questions and comments

Prioritization Criteria

- Parcel size - 50 +/- acres
- Abutting natural areas and parks
- Property cover - Wetlands, forest, headwater forest
- Frontage on streams, active river areas
- Niagara River frontage
- Rare/significant natural areas
- Relatively high climate resiliency score

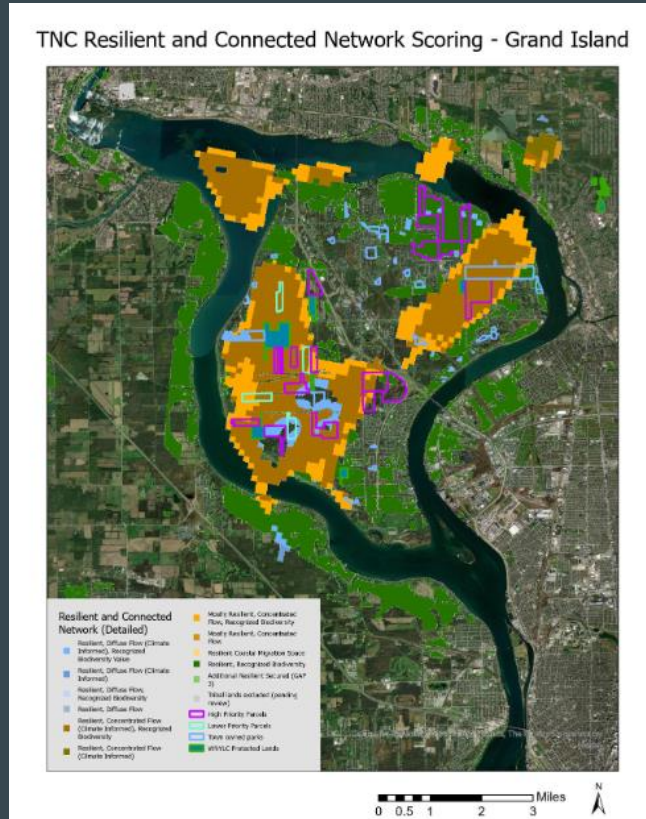


Nature Conservancy - Resilient and Connected Landscapes

Land ranking criteria based on:

- **Resilience** - the capacity of a site to maintain species diversity and ecological function as climate changes.
- **Connectivity** - how wildlife populations move across the region and where the connectors are.
- **Biodiversity** - Prioritizing resilient areas that contain rare species or have extraordinary biological diversity.

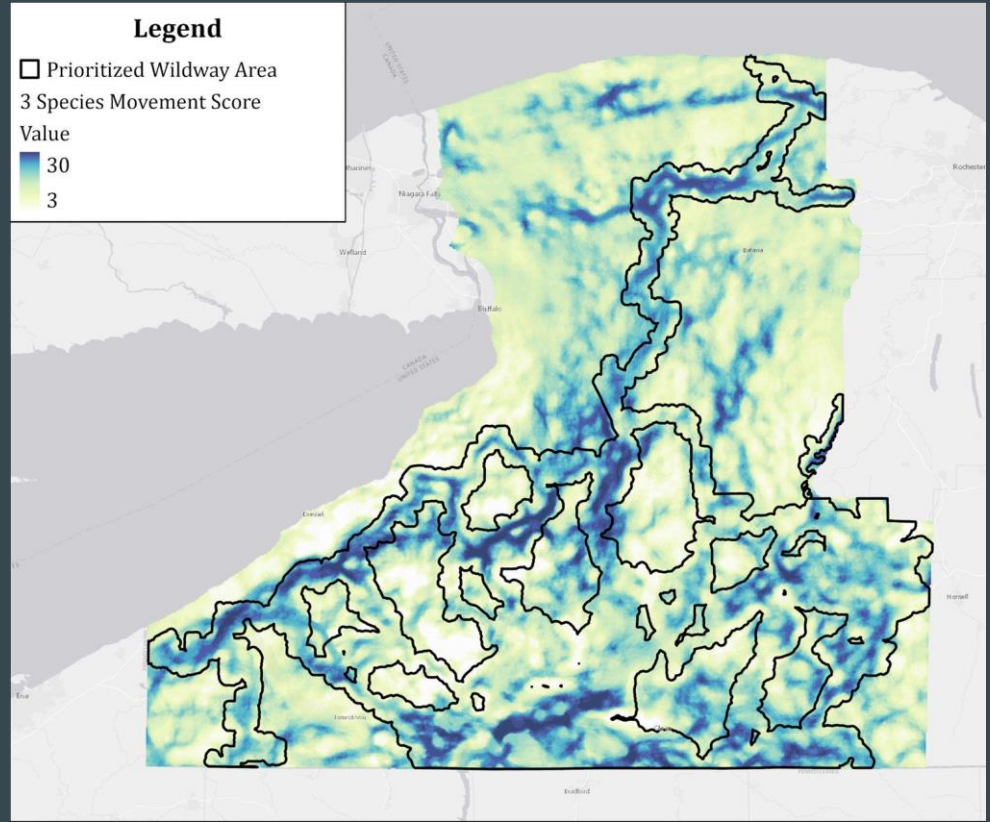
Together these represent a connected network of sites that represent the best areas to support the continued arrangement of species in response to change.



Recent Analysis: Wildlife Movement

- Worked with Wildlife Biologist/Quantitative Ecologist to analyze Wildlife Movement within the Wildway
- Analyzed Black Bear, Bobcat, and Fisher movement probability
- Utilized a circuitscape and species-specific habitat use data to run analysis which predicted habitat use for each species on a cell by cell basis.

<https://circuitscape.org/>

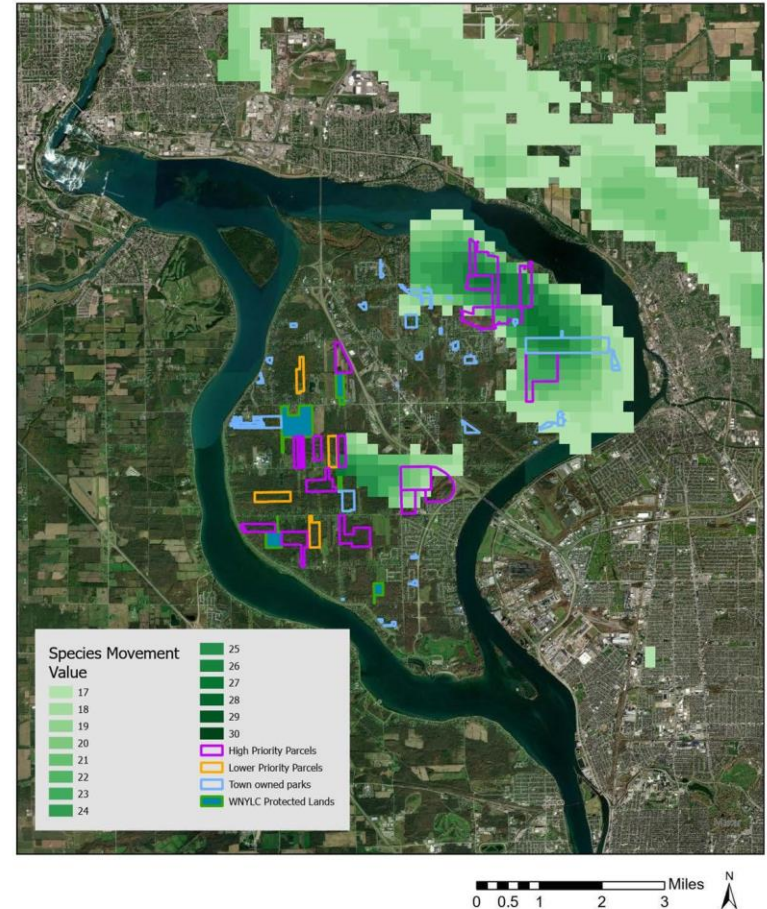


Recent Analysis: Wildlife Movement

- Worked with Wildlife Biologist/Quantitative Ecologist to analyze Wildlife Movement within the Wildway
- Analyzed Black Bear, Bobcat, and Fisher movement probability
- Utilized a circuitscape and species-specific habitat use data to run analysis which predicted habitat use for each species on a cell by cell basis.

<https://circuitscape.org/>

Land Protection and Species Movement on Grand Island



Questions and Comments



Thank you!